

# APPLIANCE TRUCK



# APPLIANCE TRUCK



MODEL SHOWN  
HDARB5CM1EC11RLS



MODEL SHOWN  
HDARB1CM2E-12WL

- Easily move heavy or bulky items up and down stairs
- Lightweight aluminum makes load handling easier
- Heavy-duty self-retracting ratchet strap secures loads; eliminates shifting
- Stair climbers glide smoothly up and down steps and over curbs
- Wings provide added support for wider loads
- 10" interlocking microcellular foam wheels are non-marking and maintenance free

SPECIFICATIONS	
Capacity in 2-wheel	600 lbs.
Capacity in 4-wheel	800 lbs.
Overall height	66-5/8"
Overall width	22-7/8"
Overall depth	15-7/8"
Nose dimensions	23" long x 5" deep
Weight	70 lbs.
Strap capacity	400-500 lbs. working load

## Features



### 4TH WHEEL ATTACHMENT

- Reduces user strain by supporting load in incline position
- Durable latch locks attachment in place when not in use
- Heavy duty roller assembly provides smooth transition between positions



### HANDLE RELEASE

- Innovative feature allows the operator to release and retract the back wheels while keeping both hands securely on the truck
- Cable release quickly deploys load support attachment



### BREAK BACK BAR

- Break back bar prevents truck from rolling forward when breaking back or uprighting loads
- Automatically returns to retracted position when not in use
- Promotes upright posture and keeps user out from underneath load

### VERTICAL LOOP HANDLE



P/N	M/N	WT.(LBS.)
304200	B1	2.5

### ERGO LOOP HANDLE



P/N	M/N	WT.(LBS.)
304205	B2	1.75

### SHEPHERD HANDLE



P/N	M/N	WT.(LBS.)
304210	B3	3.0

### PISTOL GRIP HANDLE



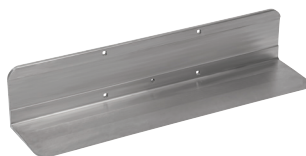
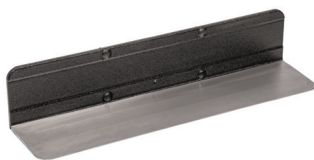
P/N	M/N	WT.(LBS.)
304245	B4	1.75

### SHEPHERD HANDLE WITH RELEASE



P/N	M/N		WT.(LBS.)
308297	B5	Right Hand	1.50
308298	B5	Left Hand	1.50
308078	B5	Release Lever	2.25

### EXTRUDED ALUMINUM NOSES



FLUSH MOUNT					
P/N	M/N		W"	D"	WT.(LBS.)
308228	M1	Extruded aluminum with coating	23	5	6.25
308216	M2	Extruded aluminum, no coating	23	5	5.75

### MICROCELLULAR WHEELS



P/N	M/N	D"	WT.(LBS.)
131010	1010	10	4.0

Puncture resistant non-marking tire on one-piece steel hub with semi-precision bearings.



P/N	M/N	D"	WT.(LBS.)
111075	1075	10	3.0

Puncture resistant, non-marking tire on one-piece high-density, interlocking polyethylene hub with semi-precision bearings.



P/N	M/N	D"	WT.(LBS.)
111080	1080	10	4

Puncture resistant, non-marking tire on one-piece high-density, interlocking polyethylene hub with semi-precision bearings.

### PNEUMATIC WHEELS



P/N	M/N	D"	WT.(LBS.)
101020	1020	10	7.0

Foam filled with three-piece offset hub and semi-precision bearings.

# APPLIANCE TRUCK

## Options

### 4TH WHEEL ATTACHMENT



Reduces strain by supporting the load in incline position. Must specify frame release options when ordering. Option is factory installed only.

### RELEASE OPTIONS



Frame-mounted cable release quickly deploys back wheels.



Handle-mounted cable release deploys and retracts back wheels without removing hands from handle. Available for B5 handle option only.

## Accessories



P/N	WT.(LBS.)
308261	5.5

Heavy-duty cast stair crawlers with smooth-rolling glide belt.



P/N	WT.(LBS.)
86006	2.5

Heavy-duty cast stair climbers with replaceable low-friction polymer glide bars. Not compatible with 4th wheel attachment.



P/N	L"	W"	WT.(LBS.)
308259	28.5	5.5	2.5

Automatically retracting break back bar prevents truck from rolling forward when breaking back or uprighting loads.



P/N	DESCRIPTION	H"	W"	WT.(LBS.)
308266	Wings with bumper	8	3	2
308267	Standard wings	8	3	3

Extruded aluminum wings add an additional 6" of load support. Two wings per side rail.



P/N	L"	W"	WT.(LBS.)
308081	108	1	1.5

Retractable strap has 1,200 lbs. maximum load and 400 lbs. working load capacity.



P/N	L"	W"	WT.(LBS.)
830871	148	2	3.0

Retractable strap has 500 lbs. working load capacity. This spring biased strap takes up the slack at all times and can be cinched tightly with ratchet.



[www.aelift.com](http://www.aelift.com)

Allstate Equipment Company Inc  
1201 McCloud Rd | Chesapeake, VA 23320 | USA

☎ sales@aelift.com